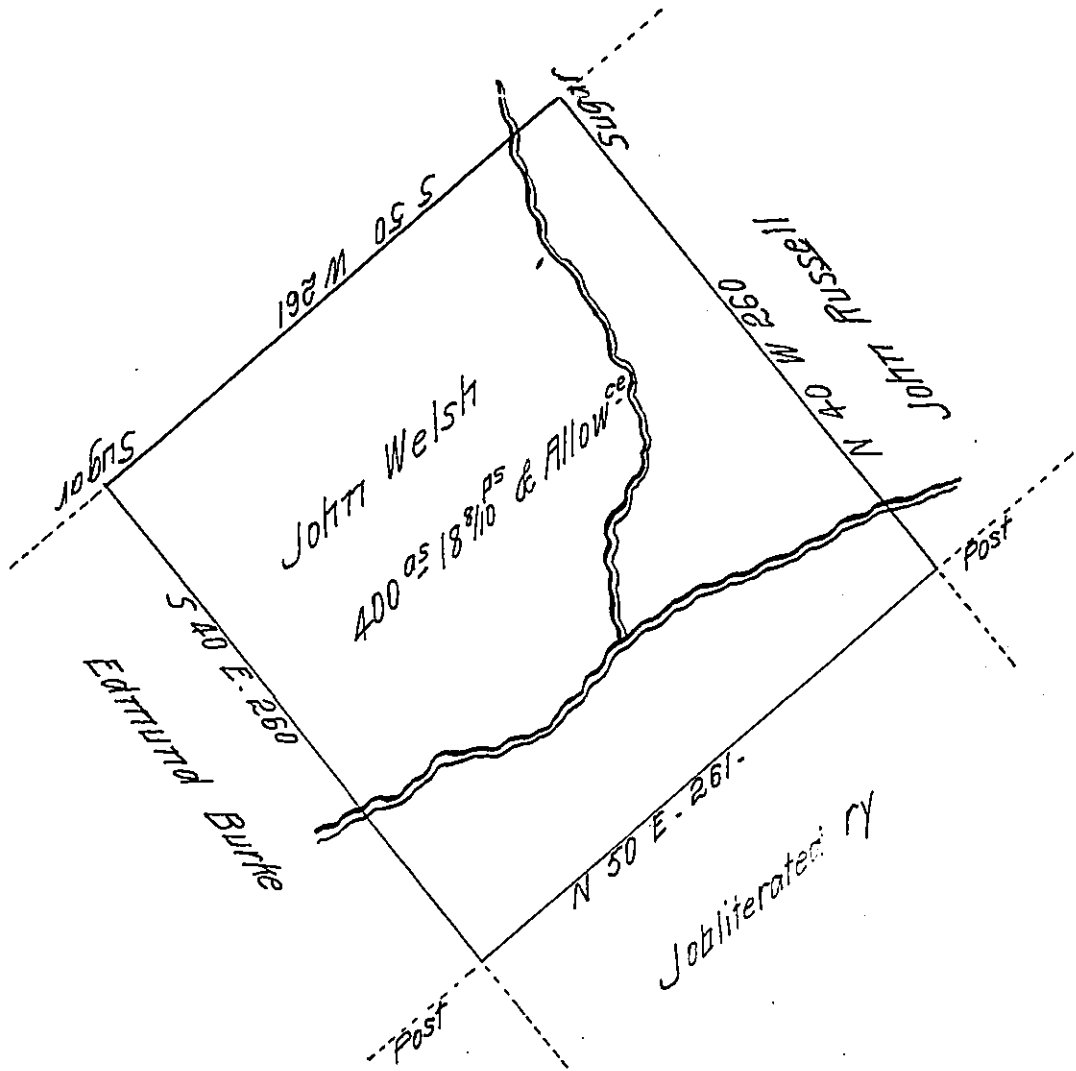


H-11-385



A draught of a tract of land called — Situated adjoining land of John Russel & others on the waters of Mahoparty or Loyalsock Creek in the County of ~~Northampton~~ Luzerne Containing four hundred Acres and eighteen & eight tenths perches & allowance &c. Surveyed for John Welsh the tenth day of April A.D. Seventeen hundred & ninety three by William Montgomery D.S. my predecessor, by Virtue of warrant dated the twenty Sixth day of February 1793 as appears by the Original draught in my office, which Survey I have examined & corrected

Richard T. Leach Esq^r
Surveyor General

John Bennett D.S.

July 29. 1814

IN TESTIMONY that the above is a copy of the original remaining on file in the Department of Internal Affairs of Pennsylvania, made conformably to an Act of Assembly approved the 16th day of February, 1833, I have hereunto set my Hand and caused the Seal of said Department to be affixed at Harrisburg, this first day of December 1910

Henry Howard,
Secretary of Internal Affairs.